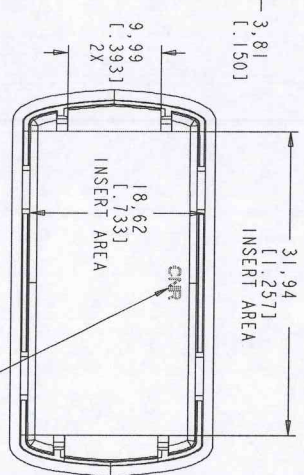
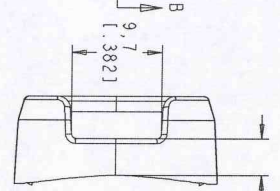
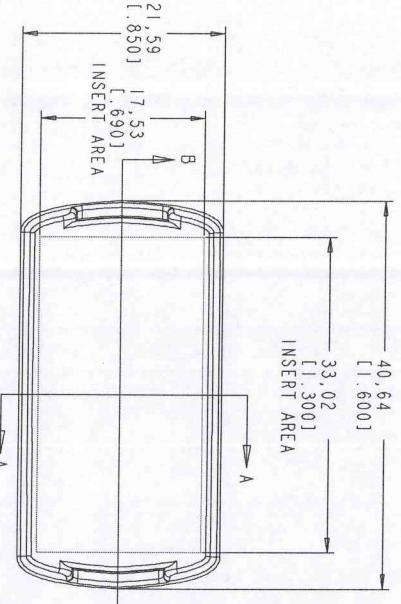
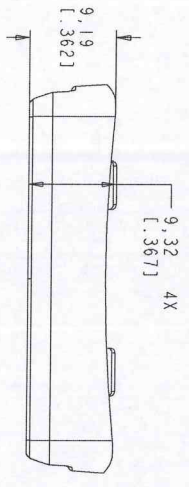
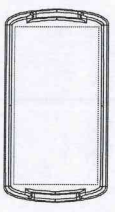


REVISIONS		DATE	INT
01	INITIAL RELEASE	04-08-12	Janves
02	ADDED CAVITY ID	05-22-12	JMM

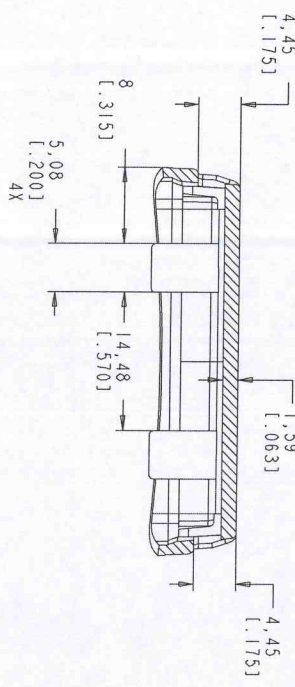
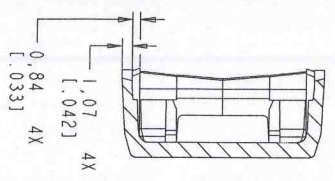
NOTES:

- FOR LIST OF MATERIAL SEE:  
PL 115126-501, 115127-501
- UNLESS OTHERWISE SPECIFIED:  
CORNERS SHOWN SHARP HAVE  
A RADIUS OF .01.
- NO KNOCKOUTS, GATES OR FLASH  
ON THE EXTERIOR SURFACES.
- FLASH PERMISSIBLE WITHIN .005 INCH.
- KNOCKOUTS FLUSH TO .005 BELOW SURFACE.
- TEXTURE: EDM #33
- INTERIOR FINISH: SPI C3 OR BETTER

SCALE 1/1



CAVITY ID: (02)  
 COPY 1.25 TALL  
 RAISED 0.05 TO 0.1



**PACNITEG**  
 Subsidiary of LaFrance Corp.  
 One LaFrance way, Concordville, Pa. 19332-5002 U.S.A.

THIS DRAWING IS THE PROPERTY OF PACNITEG. IT IS TO BE USED ONLY FOR THE PROJECT AND QUANTITY SPECIFIED. IT IS TO BE RETURNED TO PACNITEG IMMEDIATELY UPON COMPLETION OF THE PROJECT.	NAME	DATE
DRAWN: Janves	04-08-12	
CHECK: Ted	04-08-12	
APPROVE: JMM	04-13-12	

**MATERIAL:**  
 COLOR: SEE PARTS LIST

**PROCESS:**  
 INJ MOLDED

**SCALE:** 2:1

**SHEET 1 OF 1**

**PART #** 115119-01 **DRAWING NUMBER** 115119-01 **REV** 02

**CNR SERIES**  
**END CAP, BLANK**

4 3 2 1